

Newry 3 day Route Maps and sign on details

MAPS OF ROUTES & RACE/TIME TRIAL DETAILS

STAGE 1 – RACE, Friday 8th August 2014

RACE SIGN ON: St. Mark's High School, Upper Dromore Road, Warrenpoint; 5.30pm – 6.20pm

DISTANCE: 35.3

RACE ROLL OUT: 6.50pm

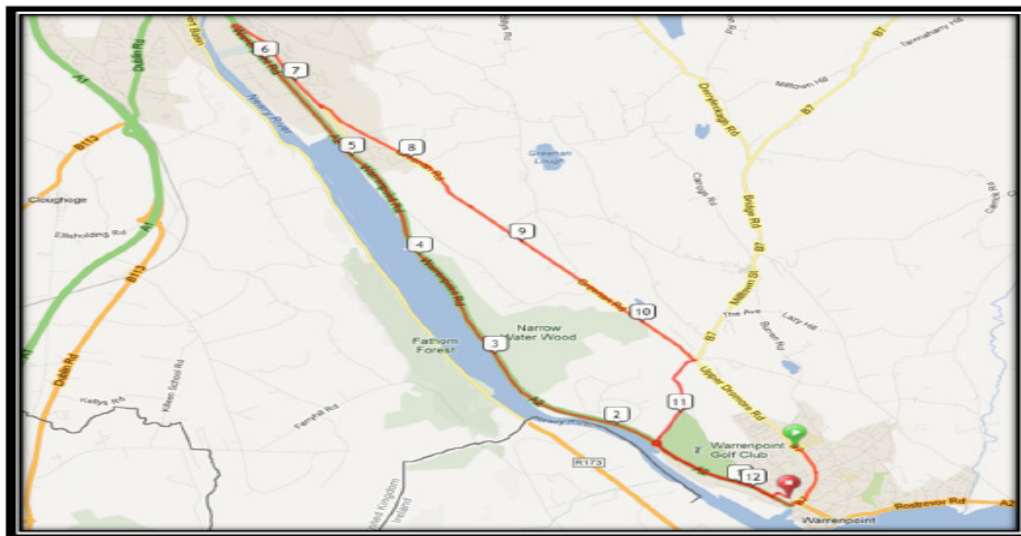
OFFICAL RACE START: Rolling start at 7.00pm Narrow Water Roundabout

RACE FINISH: Outside PSNI Station Warrenpoint

PARKING / CHANGING: St Marks High School, Warrenpoint

MARSHALS / LOCATIONS: To be confirmed one week prior to race date by Person in charge of event

ROUTE MAP



Route Instructions

Route Instructions – Any other hazards that may arise after the time of preparing this booklet will be communicated by Head Marshal prior to commencement of race

Event Race Start 7.00pm – Warrenpoint			
Location	Instruction	Miles	KM
Warrenpoint (Lap 1)	Roll-out through Warrenpoint to official start at Narrow Water Roundabout (Start Lap 1)	0.0	0.0
Newry	Race follows A2 to Newry until Roundabout @ Greenbank: Return to Warrenpoint by taking 4 th exit <i>CAUTION RACING ON DUAL CARRIAGE WAY ROAD WILL NOT BE CLOSED</i>	6.9	11.1
Warrenpoint (Lap 2)	Return to Newry at Narrow Water roundabout by taking 3 rd exit	13.8	22.2
Newry	Roundabout @ Greenbank: Return to Warrenpoint by taking 4 th exit	20.7	33.3
Warrenpoint (Lap 3 & Final Lap)	Return to Newry at Narrow Water roundabout by taking 3 rd exit	27.6	44.4
Newry	Race follows A2 to Newry, taking 3rd exit on roundabout onto Old Warrenpoint Road Follow Old Warrenpoint Road until junction with Greenan Road; turn left Follow Greenan Road until junction with Mound Road; turn right	27.3	43.9
Warrenpoint	Follow Mound Road until junction with Narrow Water roundabout; take 1 st exit	30.3	48.7
Warrenpoint (3 laps)	Race follows A2 take left turn onto Meeting/Charlotte Street, Warrenpoint (Start finish Circuit Lap 1 outside PSNI Station) Turn right onto A2 direction Narrow Water roundabout	32.3	51.9
Warrenpoint	At roundabout take 3 rd exit back toward Warrenpoint Take left turn onto Meeting/Charlotte Street, Warrenpoint (End Finish Circuit Lap 1 outside PSNI Station) – 3 Finish Circuit Laps Continue for further two laps of Finish Circuit	34	54.71
Warrenpoint	Finish – Take a left turn at Meeting Street / Charlotte Street and finishing outside the Police Station - All riders ride back to St Marks High School	35.3	56.81

STAGE 2 – Race, Saturday 9th August 2014

RACE SIGN ON: Hilltown INF Hall, 08.30am – 09.15am

DISTANCE: 53.20 miles

RACE ROLL-OUT: 09.40am

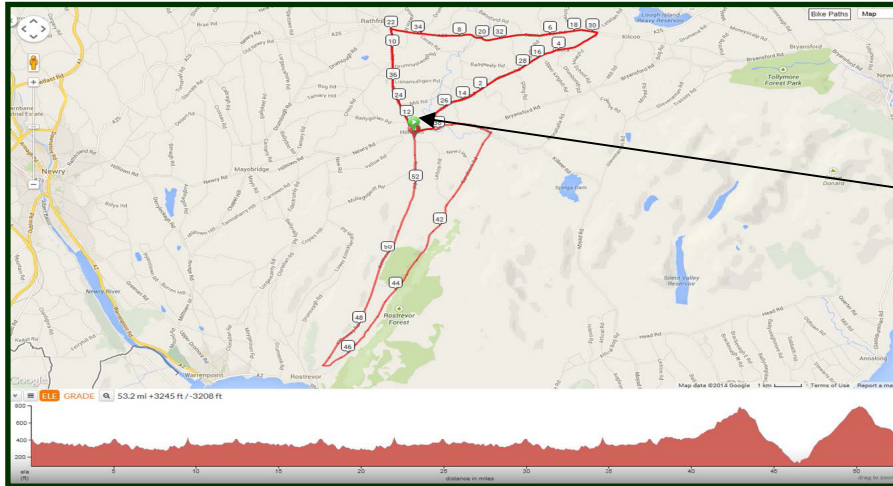
OFFICAL RACE START: Rolling start at 09.45am on B8 at Chapel opposite Clonduff GAC

FINISH: Hilltown INF Hall

PARKING / CHANGING Hilltown Square

MARSHALS / LOCATIONS: To be confirmed one week prior to race date by Person in charge of event

ROUTE MAP



**START &
FINISH AT
HILLTOWN**

Route instructions

Route Instructions – Any other hazards that may arise after the time of preparing this booklet will be communicated by Head Marshal prior to commencement of race

Event - Race, Start Time 9.45am, Hilltown			
Location	Instruction	Miles	KM
Hilltown	Official start on B8 at Chapel opposite Clonduff GAC (Lap 1), continue B8 Castlewellan Road until junction A25	0.0	0.0
Kilcoo	T Junction: Turn Left onto Castlewellan Road A25 and continue towards Rathfriland <i>CAUTION: BEWARE OF ONCOMING CARS</i>	5.0	8.1
Rathfriland	Junction: Turn Left at junction A25 on approaching Rathfriland onto Hilltown Road and continue on B25 toward Hilltown	9.5	15.9
Hilltown	T Junction: Turn Left at junction B8 onto Main Street Hilltown and continue onto Castlewellan Road <i>CAUTION: TRAFFIC ISLAND</i>	12.5	20.11
Lap 2	Repeat above	25	40.2
Lap 3	Repeat	37.5	60.3
Hilltown	After 3 rd Lap is complete turn at B25/B8 junction take left continue down hill and take right turn onto B27 Kilkeel Road, continue on B27 until Sandbank Road <i>CAUTION: BEWARE OF ONCOMING TRAFFIC WHEN TURNING ONTO KILKEEL ROAD</i>		
Hilltown	Cross Roads: Turn right at first crossroads onto Sandbank Road and continue, then merging onto Newtown Road in the direction of Rostrevor <i>CAUTION: BEWARE OF NARROW CORNER AT BRIDGE APPROX 6 MILES FROM TURNOFF ONTO SANDBANK ROAD (YELLOW WATER) & BEWARE OF ROUGH SURFACE</i>	41	65.98
Rostrevor	T Junction: Take a right onto Kilbroney Road and continue on Rostrevor Road B25 towards Hilltown <i>CAUTION: BEWARE OF ROUGH SURFACE</i>	48	77.2
Hilltown	Finish: Race will finish in Hilltown at the INF Hall <i>CAUTION: MAIN ROAD TRAFFIC</i>	53.2	85.61

STAGE 3 – Time Trial, Saturday 9th August 2014

SIGN ON: Lay by opposite Narrow Water Estate entrance; 2.30pm – 3.00pm

DISTANCE: 3.70miles

NUMBER OF LAPS: 1 lap

FIRST RIDER START TIME: 3.30pm

RACE FINISH: 3.7 miles from start towards Newry, Race Commisaires take riders times as riders pass finish line

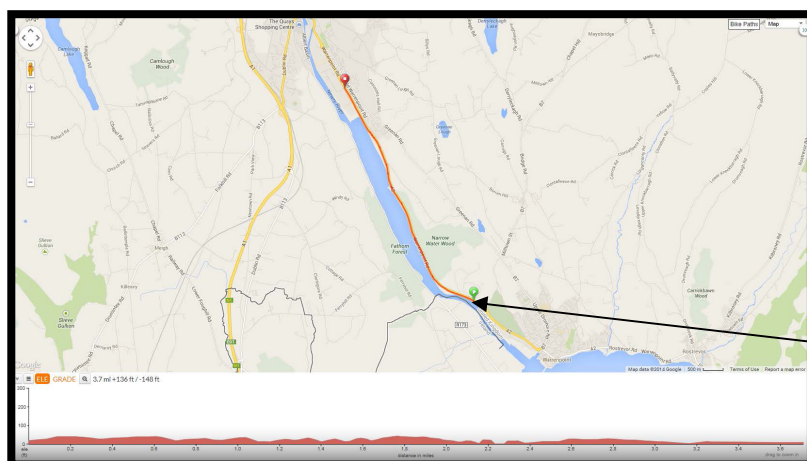
PARKING / CHANGING: **To be confirmed by Newry Wheelers**

MARSHALS / LOCATIONS: To be confirmed one week prior to race date by Person in charge of event

Time Trial – Riders will ride to the left of the left hand lane on the A2 Dual Carriageway; direction Warrenpoint toward Newry

After finish riders disperse into Greenbank Industrial Estate

ROUTE MAP



**START
NARROW
WATER
CASTLE**

Route Instructions

Route Instructions – Any other hazards that may arise after the time of preparing this booklet will be communicated by Head Marshal prior to commencement of race

Event – Time Trial Start time 3.30pm, Narrow Water Castle, Newry			
Location	Instruction	Miles	KM
Narrow Water Castle, Warrenpoint	Time Trial Narrow Water Castle on A2 dual carriage way Continue towards Newry <i>Marshals placed at Start and Finish of Time Trial</i>	0.0	0.0
Newry	Finish 3.7 miles toward Newry CAUTION: MAIN ROAD TRAFFIC Time Trial – Riders will ride to the left of the left hand lane on the A2 Dual Carriageway; direction Warrenpoint toward Newry After finish riders disperse into Greenbank Industrial Estate	3.7	5.1

STAGE 4 – Race, Sunday 10th August 2014

SIGN ON: Newry Sports Centre, Patrick Street, Newry; 09.00am – 10.00am

DISTANCE: 72.90 miles

OFFICIAL RACE START Rolling start at 10.30am on A27 on Tangragee Road at National Speed Limit Sign after Carnbane

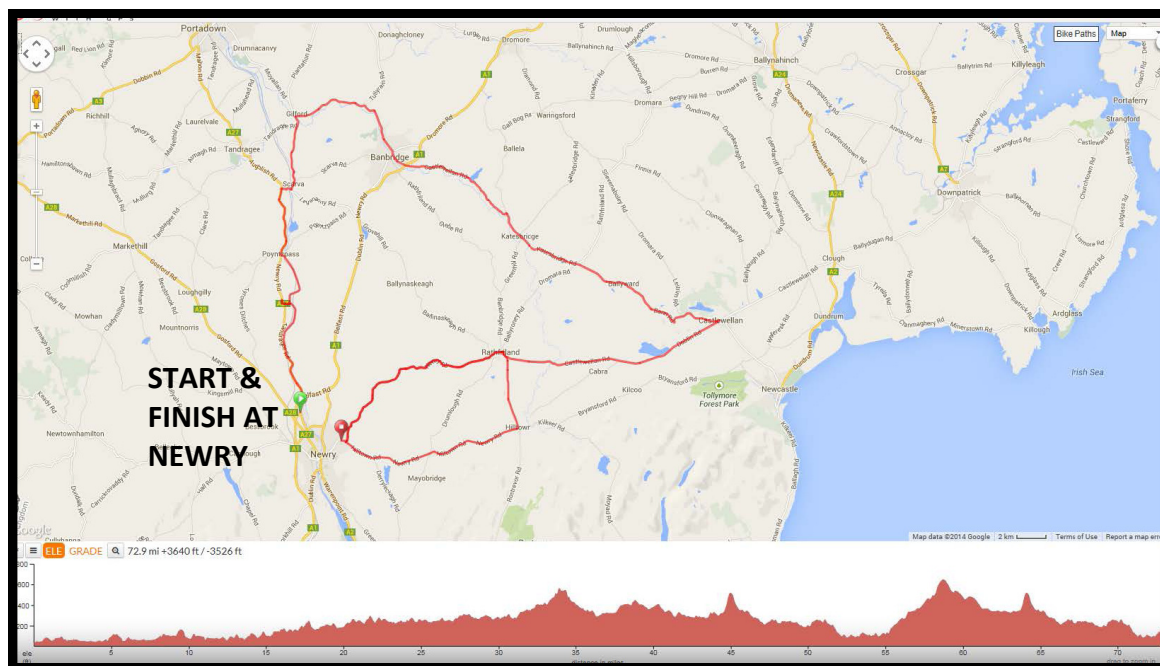
NUMBER OF LAPS: 1 lap

RACE FINISH: Outside Newry MOT Centre

PARKING / CHANGING: Newry Sports Centre

MARSHALS / LOCATIONS: To be confirmed one week prior to race date by Person in charge of event

ROUTE MAP



Route Instructions

Route Instructions – Any other hazards that may arise after the time of preparing this booklet will be communicated by Head Marshal prior to commencement of race

Event, Race Start Time 10.30am, Newry			
Location	Instruction	Miles	KM
Newry	10.15am Race roll-out Patrick Street, Monaghan Street, Merchants Quay, Canal Street, A27 Armagh Road, A27 Tangragee Rolling start at A27 Tangragee Road National Speed Limit sign after Carnbane roundabout, Newry and head towards Poyntzpass	0.0	
Poyntzpass	Continue on A27 through Poyntzpass, after Poyntzpass take 2 nd right hand turn for Scarva	10	16.09
Scarva	Cross brige and turn left in Scarva onto Gilford Road, continue on Gilford Road direction Gilford	15.2	24.45
Gilford	Take right turn onto A51 Tangragee Road, continue direction Gilford	19.8	31.86
Banbridge	Take right turn onto A50 direction Banbridge Continue on A50 to roundabout at junction with A26 Lurgan Road; keep right on roundabout onto A26 Lurgan Road – direction Banbridge Continue to Banbridge Church Street, take right turn at traffic lights then left turn onto A50 Castlewellan Road	30	48.27
Katesbridge	Continue on A50 direction Castlewellan through Katesbridge, Ballyward	34.7	55.83
Ballyward	After Ballyward head to Castlewellan	39.7	63.87
Castlewellan	At roundabout in Castlewellan take 2 nd exit onto A25 Dublin Road direction Rathfriland	42.7	68.71
Kilcoo	Continue on A25 Dublin Road through Kilcoo then Rathfriland	46.2	74.35
Rathfriland	In Rathfriland continue down Newry Street on A25 taking left turn at	50	80.46

	Church onto A25 Newry Road direction Newry Continue on A25 direction Newry		
Newry	At junction A25/B8 roundabout take left turn direction Mayobridge/Hilltown	58.5	80.46
Mayobridge	Continue on B8 through Mayobridge, direction Hilltown	61	80.4
Hilltown	At Hilltown take left turn onto Rathfriland Road direction Rathfriland	64	103
Rathfriland	At junction Rathfriland Road / A25 take left turn onto A25 up hill through Rathfriland Continue down Newry Street on A25 taking left turn at Church onto A25 Newry Road direction Newry Continue on A25 direction Newry	67	107.83
Newry	Continue on A25 direction Newry At junction A25/B8 roundabout take right turn to finish (300m from finish)	73	117.48
Finish	Finish at MOT Centre on Rathfriland Road		

6.0 INSTRUCTIONS FOR PARTICIPANTS AND EVENT PERSONNEL OF THE RACE

Participants must:

1. Have a bicycle that is in good working order (which complies with relevant Technical Regulations);
2. Be mindful of the need to act in a manner that takes account of their own safety and the safety of others;
3. A safe distance must be maintained between other riders
4. Wear a hard-shell helmet;
5. Ensure their fitness level is appropriate given the nature of the event;
6. Be conversant with and obey the rules of the road;
7. Familiarise themselves with the event route; all participants will be informed of hazards prior to race commencing.
8. "Sign-on" for the event;
9. Be aware that marshals are not empowered to stop traffic
10. Riders participate at their own risk and must rely on their own ability and judgement in dealing with all hazards.